



Current as of
June 2024



Sinneave
FAMILY FOUNDATION

STRATEGIC DIRECTION





THE ABILITY HUB

Message from Leadership

As The Sinneave Family Foundation seeks to fulfill its mission in an ever changing world, we look to build on our past successes in pursuing a bold path that we believe will result in the greatest impact on the community. Autistic adults are under-served as many funders and donors continue to focus on child and youth-related initiatives. Targeted investment and leveraged funding approaches will be required to foster and sustain solutions. We invite you to join us in responding to emerging needs by empowering individuals, communities, and organizations to take action that promotes positive change.

Susan Mallon, Board Chair Tanya McLeod, President

About The Sinneave Family Foundation

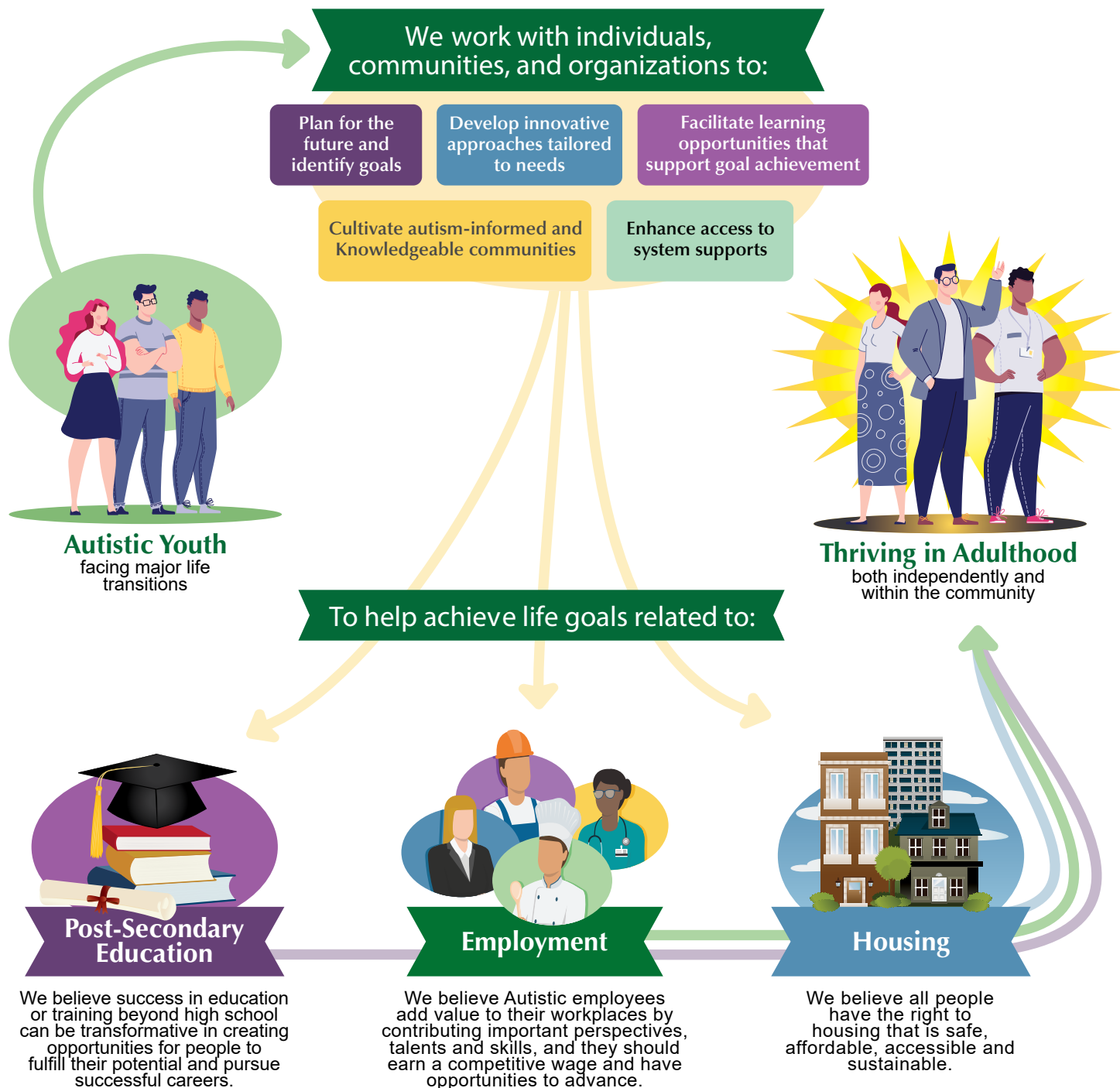
The Sinneave Family Foundation is an operating foundation based in Calgary, Alberta that has been committed to enhancing quality of life for Autistic youth and adults since its inception in 2008. Using our facility - The Ability Hub - as a community incubator, we collaborate with others to generate innovative solutions to challenges. We operate on investment returns and leverage public, private and philanthropic contributions to help people achieve goals they have set for themselves.

We commit to providing value to the community by coordinating and investing in a portfolio of purposeful initiatives and projects aimed at advancing knowledge and improving outcomes in education beyond high school, employment, and housing.

Our strengths include access to flexible funding, a highly skilled and experienced team, a focus on outcomes, and the ability to make data-informed decisions.

Theory of Change

We believe that investing resources in the period of life in which youth transition to adulthood provides significant and lasting returns. Our goal is that Autistic Canadians are successful in educational pursuits, have jobs, and live as independently as possible as valued members of their communities.



Vision

Our vision is that people live, learn, work and thrive in their communities and realize their desired futures.

Mission

Our mission is to reduce barriers and enhance opportunities for Autistic youth and adults.

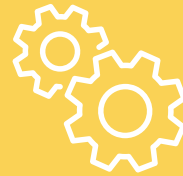


Autistic Youth & Adults

WHO



Engage Community



Inform Systems Change

WHAT



Share Promising Practices



Identify Gaps



Innovate Solutions

How We Do It

Identify Gaps

We inquire and seek the input of stakeholders to understand gaps in services and to identify system barriers to accessing support and opportunities.

Innovate Solutions

We develop programs and services, and evaluate their impact on helping people achieve their goals.

Share Promising Practices

We connect with a variety of stakeholders to mobilize our learnings and to incorporate new strategies for shaping successful futures.

Engage Community

We collaborate and we contribute expertise, organizational supports and financial leverage where it can build capacity or unlock system potential to enhance opportunities.

Inform Systems Change

We synthesize data and knowledge to support decision makers to take action and develop strategies that will better meet people's needs.

Core Values

Trust

We understand that building relationships on trust and mutual respect are critical to our effectiveness and ability to deliver impact.

Inclusion

We value neurodiversity and believe that people should have fair and equitable access to what they need to be successful.

Collaboration

We recognize the benefit of working with others toward collective community impact and prioritize lived experience in helping build solutions and opportunities.

Empowerment

We aim to empower people and organizations to make decisions and take actions towards their own success and the well-being of their communities.

Sustainability

We are committed to promoting enduring solutions that are adaptable to local circumstances and community resources.

Strategic Priorities

To be a trusted source of information, navigation and transition support

- ➔ Extend our reach and make information and support available to more people.
- ➔ Create learning opportunities for community members, employers and professionals.
- ➔ Engage lived experience in the development and implementation of initiatives.

To be an inclusive centre for learning and community connection

- ➔ Make The Ability Hub space available to support community networking and cooperation, to deliver complementary services and programs, and to advance common interests.
- ➔ Enhance networking and encourage others to develop creative and inclusive ways to reach and serve youth and adults.
- ➔ Convene stakeholders and invest in partnerships that focus on priority issues.

To be a hub of innovation and collaboration

- ➔ Invite new ways of thinking about, understanding and addressing needs.
- ➔ Co-create resources and services that help people achieve their goals, and that enhance the knowledge and skills of those serving Autistic youth and adults.
- ➔ Support collective work and facilitate coordination among stakeholders to advance common interests, expand capacity, support scalability, and attract investment.

To be a data-informed influence on systems and policies

- ➔ Contribute to advancing a provincial autism action plan and a National Autism Strategy.
- ➔ Share evaluative findings to expand promising practices to other communities.
- ➔ Advance knowledge related to key social policy issues affecting the autism community by tracking key indicators, and facilitating research and evaluation.

Stronger Together



We take a collective impact approach that is geared to the achievement of lasting, measurable improvements in the health, well-being, and empowerment of individuals, families and communities. In order to deliver on our four strategic priorities, we will continue to support community networks, foster collaboration, and develop promising practices.

We will diligently steward our resources, continuously develop a diverse and effective cross-functional team, foster an inclusive work and service culture, and build infrastructure, systems and technology to support this work. Evaluation will be integral to continually improve and learn. Join us in thinking and acting strategically to better understand and meet the needs of Autistic Canadians.

The Sinneave Family Foundation

Phone: 403-210-5000

Email: info@sinneavefoundation.org

Toll Free: 1-888-733-7976

Website: sinneavefoundation.org

300, 3820 – 24 Avenue NW, Calgary, Alberta, Canada T3B 2X9

